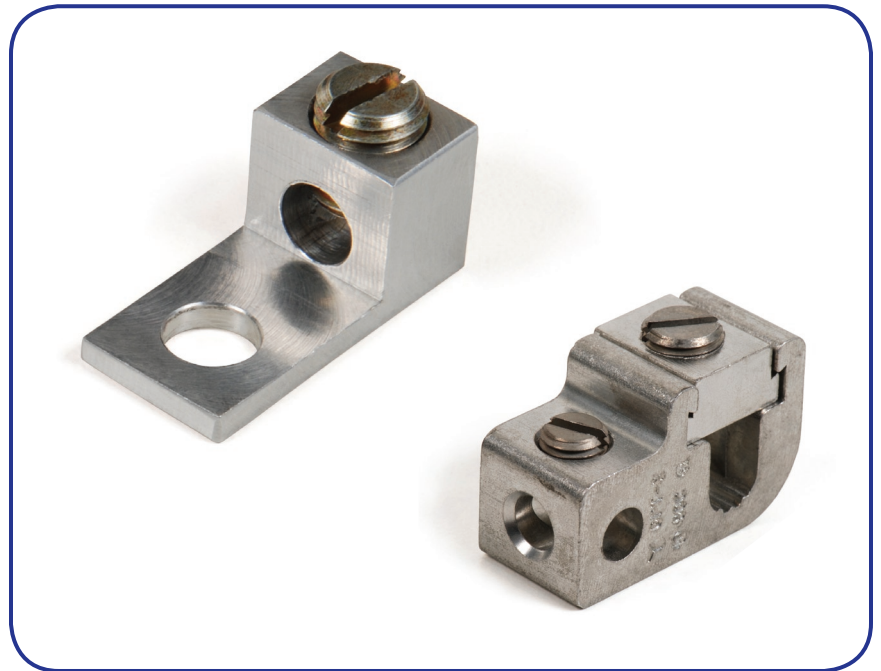




## Allied Bolt

### Lugs & Tap Connectors



#### Features

- 600 Volt rated
- One hole, front entrance
- Body constructed from high-strength aluminum alloy extrusion
- Lug is 100% reusable using either screw driver or hex allen wrench
- Maximum conductivity, compact design, light weight with superior strength
- Electro-tin plated finish to assure minimum contact resistance and protection against corrosion when used with copper wire
- Bronze body made of high-strength corrosion resistant copper alloy

#### Application

##### Lugs

Aluminum and bronze solderless Lugs provide a safe and convenient termination for multiple ground wires.

##### Tap Connectors

Tap Connectors are fabricated from high-strength aluminum alloy extrusion. 100% reusable, using a hex wrench. Sliding retainer allows for easy installation on run conductor. Electro-tin plated finish to assure minimum contact resistance and protection against corrosion when used with copper wire.

# Lugs & Tap Connectors

## Ordering Information

Lugs				Diameter						
ARRIS #	Mfg #	Torque Value	Wire Range	L	W	H	T	B	C	D
209593	8700	45 lbs	14-6	1 <sup>1</sup> / <sub>16</sub> "	1 <sup>1</sup> / <sub>2</sub> "	1 <sup>1</sup> / <sub>2</sub> "	3 <sup>3</sup> / <sub>32</sub> "	1 <sup>1</sup> / <sub>16</sub> "	1 <sup>1</sup> / <sub>4</sub> "	1 <sup>7</sup> / <sub>64</sub> "
209594	MBL414		14-4	1 <sup>1</sup> / <sub>4</sub> "	1 <sup>7</sup> / <sub>32</sub> "	9 <sup>9</sup> / <sub>16</sub> "	9 <sup>9</sup> / <sub>64</sub> "		1 <sup>7</sup> / <sub>64</sub> "	1 <sup>7</sup> / <sub>64</sub> "
211694	LAMA2-14-QY	50 lbs	14-2	1 <sup>5</sup> / <sub>32</sub> "	1 <sup>1</sup> / <sub>2</sub> "	3 <sup>5</sup> / <sub>64</sub> "	7 <sup>7</sup> / <sub>64</sub> "	1 <sup>1</sup> / <sub>16</sub> "	5 <sup>5</sup> / <sub>16</sub> "	1 <sup>7</sup> / <sub>64</sub> "

## Tap Connectors

ARRIS #	Mfg #	Description	Std Pkg
209600	GPT-2	Parallel Tap Connector	50

Specifications are subject to change without notice.

The capabilities, system requirements and/or compatibility with third-party products described herein are subject to change without notice. ARRIS, the ARRIS logo, Auspice®, C3™, C4®, C4c™, Cadant®, C-COR®, CHP Max®, ConvergeMedia™, Cornerstone®, CXM™, D5™, Digicon®, Flex Max®, Keystone™, MONARCH®, n5™, nABLE™, nVision®, OpsLogic®, OpsLogic® Service Visibility Portal™, PLEXIS®, PowerSense™, Regal®, ServAssure™, Service Visibility Portal™, TeleWire Supply®, TLX®, Touchstone®, VoiceAssure™, VSM™, and WorkAssure™ are all trademarks of ARRIS Group, Inc. Other trademarks and trade names may be used in this document to refer to either the entities claiming the marks and the names of their products. ARRIS disclaims proprietary interest in the marks and names of others. © Copyright 2009 ARRIS Group, Inc. All rights reserved. Reproduction in any manner whatsoever without the express written permission of ARRIS Group, Inc. is strictly forbidden. For more information, contact ARRIS.

