

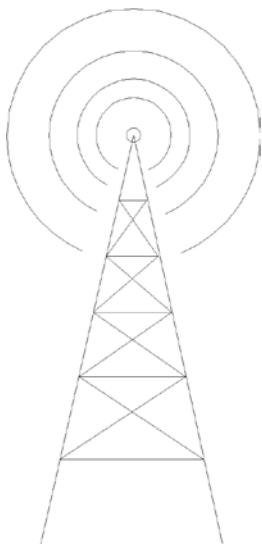


## WiDOX Wireless Solutions

### Wireless Modem WM550-2

#### Benefits

- Variable modulation types for increased distance and reliability
- Provides best-in-class subscriber experience
- Enables operators to expand revenues by offering high-speed at tiered price and performance levels



#### Application

The ARRIS Wireless Modem WM550-2 is based on DOCSIS® 2.0 certified technologies that deliver advanced high-speed data services over DOCSIS compatible wireless networks. Specially designed for 2MHz segmentation, it meets operators' objective of maximizing revenue by providing an efficient, stable design. Consumers appreciate that it is easy to install, has superior throughput and is packaged in an attractive, space-saving design. No other modem delivers as many features at such a competitive price.

#### Features

- Designed specifically for 2MHz channel spacing
- Custom designed SAW technology to reduce adjacent channel interference
- Can deliver up to 8.5mbps of downstream data
- Additional upstream modulations for higher rate services
- CDMA now supported in the upstream
- Increased upstream noise immunity and error correction
- Performs in systems from 700Mhz to over 10GHz
- Supports tiered data services
- Offers high-speed data services via bridged 10/100 Base-T Ethernet and full speed (12 Mbps) Universal Serial Bus (USB) 1.1
- Compact size minimizes space requirements
- Easy to understand visual indicators reduce subscriber diagnostic needs
- Easily accessed standby option suspends connection to PC but maintains connection to operator's WMTS to preserve subscriber's LAN while isolating from the outside wireless network
- Horizontal or vertical mounting options – built-in swivel stand for vertical desktop use and built-in bracket for wall mounting
- Superior data throughput
- Installation assistance via an exclusive web server

#### Our Proud Heritage

Since 1995, while the Internet was still in its infancy, a team of engineers working for a company called LANcity (acquired by ARRIS in 1999) designed and introduced the first successful cable modem for residential use. LANcity quickly became one of the largest providers of proprietary high-speed data systems for cable. As the market has evolved to the open standards-based technology, ARRIS has led the market with the development and introduction of DOCSIS and Euro-DOCSIS-based products including cable modems and CMTSs. Today ARRIS is a leader in the design and development of Cable Modems, Network Interface Units (NIUs) and E-MTAs (embedded multimedia terminal adapters). This expertise provides the foundation for us to offer best in class products at competitive prices for wireless applications.

# ARRIS WiDOX Wireless Solution Wireless Modem WM550-2

## Specifications

<b>Physical:</b>	Operating Temperature °F (°C) .....41 to 104 (5 to 40) Storage Temperature °F (°C) ..... -40 to 158 (-40 to 70) Relative Humidity (Min.-Max.) (Non condensing) .....5-85% Color .....Dark Grey Dimensions (H x W x D) in. (cm) .....6.8 x 6.4 x 1.2 (17.2 x 16.3 x 3.0) Weight lbs. (kg).....8 (350) Diagnostic LEDs ..... Power, On-line, Cable, USB, Ethernet
<b>Interfaces:</b>	RF Interface .....F-type Data Interfaces .....10/100 Base-T Ethernet (RJ-45 ), USB 1.1 Series B connector Input Power .....90-132 V ac, 47-63 Hz, 9 Watts User Switch ..... Standby
<b>RF Downstream:</b>	Frequency Range (MHz) .....54-860 Bandwidth (MHz) .....2 Modulation (QAM) .....QAM64, QAM16 Data Rate (Mbps) (Max.) .....9.5, 6.4 Symbol Rate .....1.6Ms Input Impedance (Ohms) .....75 RF Input Sensitivity Level (dBmV) ..... approx. -27 (64QAM) to +15
<b>Upstream:</b>	Frequency Range (MHz) .....5 to 42 Bandwidth .....200, 400, 800, 1600 KHz S-CDMA .....1600 KHz Modulation .....QPSK, 8QAM, 16QAM Data Rate (Mbps) (Max.) .....Up to 6.4Mbps RF Output Level (dBmV) A-TDMA: ..... +8 to 55dBmV (8QAM, 16QAM), +8 to 58 dBmV (QPSK) S-CDMA: ..... +8 to +53 dBmV (all modulations) Automatic Level Adjust ..... Yes Gain Control Range (dB) .....50 Frequency Stability (kHz) ..... +/- 5 Output Impedance (Ohms) .....75
<b>Standards:</b>	Based on DOCSIS 2.0 certified technology Safety ..... UL/CE EMC ..... UL/CE Other ..... WEEE, ROHS

## Ordering Information

Part #	Description
620355	ARRIS Wireless Cable Modem WM550-2 North American 110V
620356	ARRIS Wireless Cable Modem WM550-2 European 220V

The capabilities, system requirements and/or compatibility with third-party products described herein are subject to change without notice. ARRIS, the ARRIS logo, Auspice®, C3™, C4®, Cadant®, C-COR®, CHP Max®, Cornerstone®, CXM™, D5™, Digicon®, Flex Max®, Keystone™, MONARCH®, n5™, nABLE™, NSM™, nVision®, OpsLogic®, OpsLogic Service Visibility Portal™, PLEXIS®, PowerSense™, Regal®, ServAssure™, Service Visibility Portal™, TeleWire Supply®, TLX®, Touchstone®, VoiceAssure™, VSM™, and WorkAssure™ are all trademarks of ARRIS Group, Inc. Other trademarks and trade names may be used in this document to refer to either the entities claiming the marks and the names of their products. ARRIS disclaims proprietary interest in the marks and names of others. © Copyright 2008 ARRIS Group, Inc. All rights reserved. Reproduction in any manner whatsoever without the express written permission of ARRIS Group, Inc. is strictly forbidden. For more information, contact ARRIS.  
31 October 2008